



**KELLER
WILLIAMS
SIGNATURE**

**NEXT LEVEL
PRIME PLAN**

Welcome to Next Level PRIME!

We are looking forward to helping you and your family achieve a healthy lifestyle and improved health. As a PRIME member, you have access to all of the Next Level care locations for your primary care, annual physical, and urgent care needs 7 days a week. You also have access to virtual care 24/7. This benefit has been provided through your company/association.

Should you have any questions about this benefit, feel free to reach out to your dedicated PRIME account manager.

To take full advantage of your PRIME membership, we highly recommend downloading the Next Level app by texting NLUCAPP to 313131. Through our app, you can contact a care navigator with the simple press of the orange PRIME button. You also have the option of reaching a care navigator by phone at 832-957-6200.

Sincerely,

Karen Rakers, MD, Chief Medical Officer
Next Level Health & Wellness

Next Level Urgent Care | www.nextlevelurgentcare.com

Office: 281-783-8162 | Fax: 281-336-0764

nextlevel
HEALTH & WELLNESS



Karen Rakers, MD
Chief Medical Officer,
Next Level Health and Wellness



Gregory Baldwin
Next Level PRIME
Account Manager
Cell: 832-755-5111

gbaldwin@nextlevelurgentcare.com

NEXT LEVEL

PRIME MEMBERSHIP

Take advantage of **the Next Level Prime Membership** and give your employees and their eligible dependents unlimited access to high-quality, cost-effective medical care.

\$0 Copay for Telemedicine Visits

Urgent Care with 100% coverage

\$75 Monthly Premium for Employee & All Eligible Dependents

Convenient locations throughout the Greater Houston area

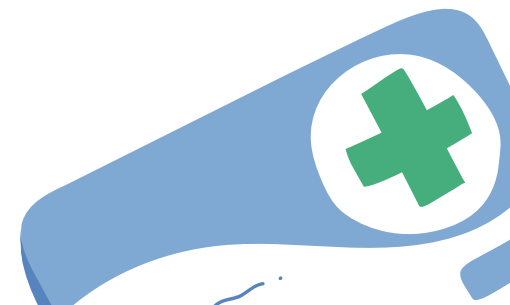
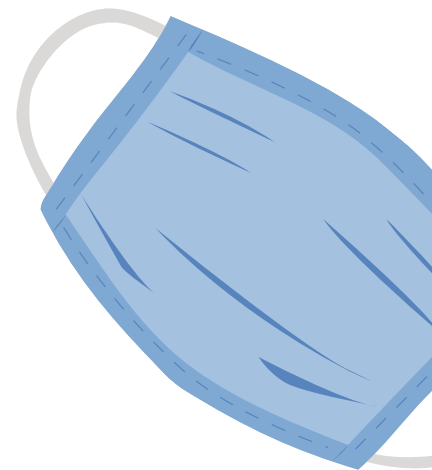
Urgent Care Services

- Upper Respiratory Infections
- Urinary Tract Infections
- X-Ray for Acute Injury
- Sprains, Strains, Splints & Casts for Broken Bones
- Gastroenteritis
- IV Fluids for Dehydration
- Stitches for Lacerations
- Abscesses
- Pink Eye
- Rashes
- Headaches
- Back Pain
- Ear Infections
- and Much More!

Primary Care & Preventive Services

- Annual Physicals
- 24/7 Telemedicine
- Well Woman's Exams
- Well Child Exams
- Diabetes
- Hypertension
- Thyroid Conditions
- Depression & Anxiety
- Chronic Diseases
- Preventative Screenings
- Blood Draws
- Specialist Referrals
- and Much More!

nextlevel
URGENT CARE



Services We Offer:

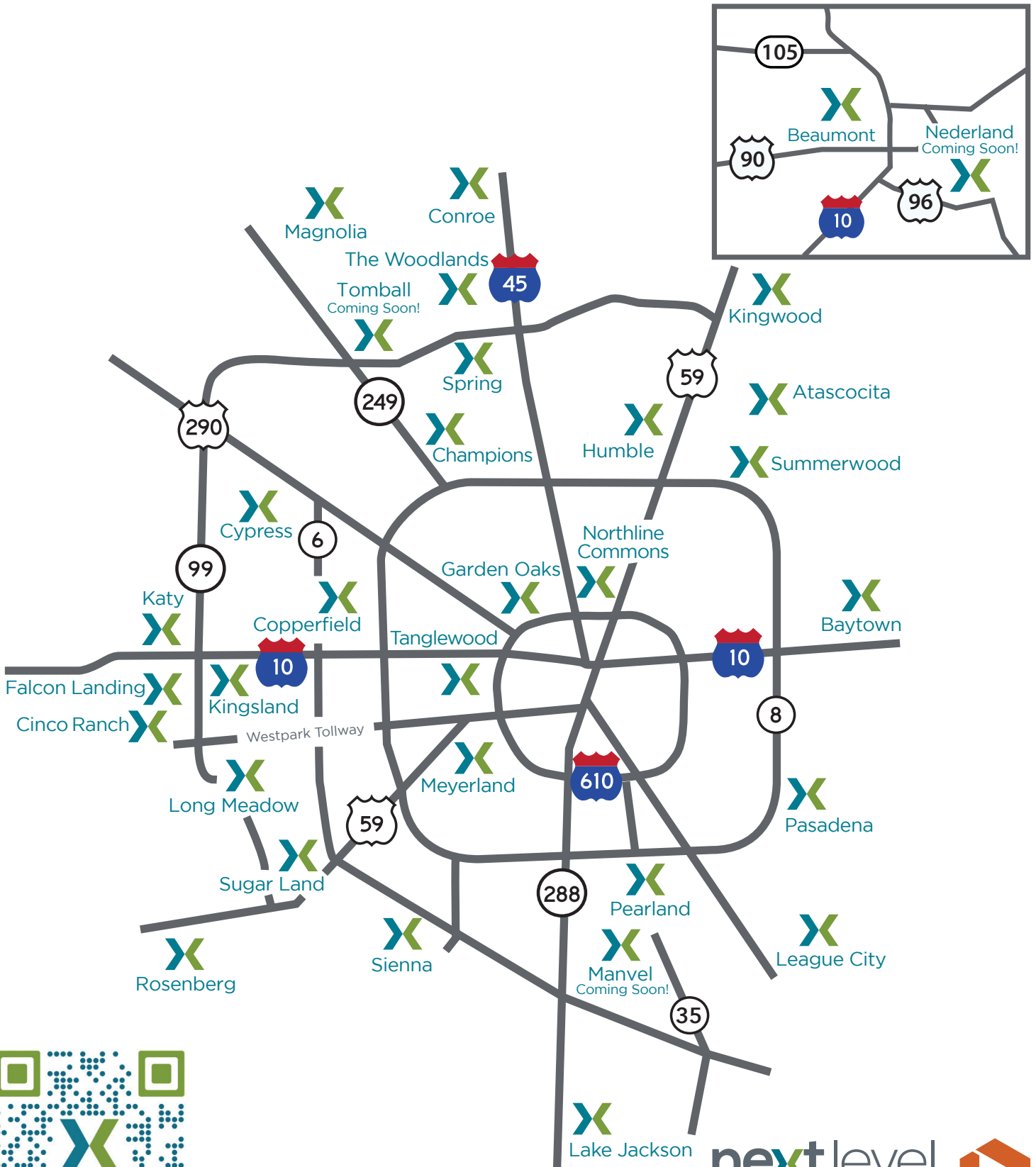
Primary Care

- Annual physicals
- Well Woman Exams
- Well Child Exams
- Vaccinations
- Diabetes
- Hypertension
- Thyroid Conditions
- Depression & Anxiety
- Chronic Diseases
- Preventive Screenings
- Blood Draws
- Specialist Referrals

Urgent Care

- Upper Respiratory Infections
- Urinary Tract Infections
- X-ray for Acute Injury
- Sprains, Strains, Splints & Casts for Broken Bones
- Gastroenteritis
- IV fluids for Dehydration
- Stitches for Lacerations
- Abscesses
- Pink Eye
- Rashes
- Headaches
- Back Pain
- Ear infections

Next Level PRIME Houston Locations



Scan the QR code for your closest location!



Next Level PRIME Houston Locations

ATASCOCITA

Open 9am-9pm
7 days a week
7120 FM 1960
Humble, TX 77346

BAYTOWN

Open 9am-9pm
7 days a week
7710 Garth Rd., Ste. A
Baytown, TX 77521

BEAUMONT

Open 9am-9pm
7 days a week
6342 Phelan Blvd
Beaumont, TX 77706

CHAMPIONS

Open 9am-9pm
7 days a week
15882 Champion Forest Dr.
Spring, TX 77379

CINCO RANCH

Open 9am-9pm
7 days a week
10705 Spring Green Blvd.,
Ste. 600
Katy, TX 77494

CONROE

Open 9am-9pm
7 days a week
1246 N. FM 3083 Rd. W
Conroe, TX 77304

COPPERFIELD

Open 9am-9pm
7 days a week
8100 Hwy. 6 North, Ste. E
Houston, TX 77095

CYPRESS

Open 9am-9pm
7 days a week
8350 N. Fry Rd., Ste. 400
Cypress, TX 77433

FALCON LANDING

Open 9am-9pm
7 days a week
9722 Gaston Rd., Ste. 190
Katy, TX 77494

GARDEN OAKS

Open 9am-9pm
7 days a week
1717 W. 34th
Houston, TX 77018

HUMBLE

Open 9am-9pm
7 days a week
9729 FM 1960 Bypass
Humble, TX 77338

KATY

Open 9am-9pm
7 days a week
1420 Katy Fort Bend Rd.
Katy, TX 77493

KINGSLAND

Open 9am-9pm
7 days a week
21700 Kingsland Blvd.,
Ste. 104
Katy, TX 77450

KINGWOOD

Open 9am-9pm
7 days a week
4435 Kingwood Dr.
Houston TX 77339

LAKE JACKSON

Open 9am-9pm
7 days a week
101 Winding Way
Lake Jackson, TX 77566

LEAGUE CITY

Open 9am-9pm
7 days a week
2560 E. League City Pkwy.,
Ste. B
League City, TX 77573

LONG MEADOW

Open 9am-9pm
7 days a week
7101 Grand Parkway #180
Richmond, TX 77407

MAGNOLIA

Open 9am-9pm
7 days a week
9511 FM 1488 Suite 1100
Magnolia, TX 77354

MANVEL

Coming Soon!

MEYERLAND

Open 9am-9pm
7 days a week
4936 Beechnut Street
Houston, TX 77096

NEDERLAND

Coming Soon!
1031 Nederland Ave,
Nederland, TX 77627

NORTHLINE COMMONS

Open 9am-9pm
7 days a week
4414 N Freeway,
Ste. 800
Houston TX 77022

PASADENA

Open 9am-9pm
7 days a week
7315 Fairmont Pkwy
Pasadena, TX 77505

PEARLAND

Open 9am-9pm
7 days a week
8325 Broadway,
Ste. 220
Pearland, TX 77581

ROSENBERG

Open 9am-9pm
7 days a week
4002 FM 762 Suite 100
Rosenberg, TX 77469

SIENNA

Open 9am-9pm
7 days a week
8720 Hwy. 6, Ste. 400
Missouri City, TX 77459

SPRING

Open 9am-9pm
7 days a week
5211 FM 2920 Rd.
Spring, TX 77388

SUGAR LAND

Open 9am-9pm
7 days a week
16312 Southwest Freeway
Sugar Land, TX 77479

SUMMERWOOD

Open 9am-9pm
7 days a week
11501 N Sam Houston Pkwy E.
Humble, TX 77396

TANGLEWOOD

Open 9am-9pm
7 days a week
5749 San Felipe Street
Houston, TX 77057

TOMBALL

Coming Soon!
14099 FM 2920
Tomball, TX 77377

THE WOODLANDS

Open 9am-9pm
7 days a week
25750 Kuykendahl Rd.,
Ste. A
Tomball, TX 77375



Welcome to Next Level **PRIME!**



Health and wellness solutions
that benefit you and your company.

Have you scheduled your annual physical
you with an amazing benefit including
Let us make sure you are up to date
vaccines. Next Level PRIME will help



Schedule your Next Level Prime
appointment today with the Next Level
app, or call 832-957-6200.

**Scan the QR code now
to get started!**



nextlevel
HEALTH & WELLNESS

nextlevelurgentcare.com

Our PRIME Program takes Annual Exams to the Next Level.

Next Level PRIME is all about developing a new patient-centric approach to health and wellness, starting with the Annual Exam. Instead of the typical rushed, impersonal physical, **Next Level PRIME** provides patients an elevated experience that's more in-depth and personal. Plus, **PRIME** offers more convenience, with virtual visits, multiple locations, and extended business hours.

Check out our new annual check-up procedure:

Step

1

Virtual Visit with your Prime Provider, where you can discuss your medical history, any health changes, and voice any concerns.

Step

2

Visit any of our Next Level Urgent Care locations for an in-person exam and to have labs taken.

You can schedule this through Prime's Care Navigator, and this visit can take place any day of the week between 9 a.m. and 9 p.m.

Step

3

Final Virtual Visit with your Prime Provider to go over the results, discuss any risk factors and devise a wellness game plan for the coming year.

This is an in-depth meeting, where you can have a thorough, detailed discussion about your health, and won't feel rushed at all.

Schedule your Next Level Prime Annual Physical today through the Care Navigator on the Next Level app.



next level
HEALTH & WELLNESS
nextlevelurgentcare.com

Next Level PRIME FAQ



How do I get started?

Using PRIME is as easy as downloading the App and pressing the orange button to be connected with a Care Navigator.



Do I need an appointment?

Preventive Care/Chronic Care – Yes you do! Let us know you are coming so that we can ensure we have the vaccinations or labs you require on hand.

Urgent Care – You can call ahead or walk right in. But it is always faster when you let us know you are coming.

Telemedicine – Our Care Navigators will set you up with an appointment any time day or night.



I already have a Primary Care Doctor, can I use PRIME for anything?

If you have a health concern when your PCP is unavailable, use PRIME! At the end of your appointment, we will send a summary of your office visit to your Primary Care Physician.

You now have access to healthcare providers 7 days per week at no cost to you!

- 24/7 Care Navigators who can answer health questions and schedule appointments
- 24/7 Telemedicine availability
- Primary Care appointments for Diabetes, Hypertension, High Cholesterol and all other chronic health problems 7 days per week 9am-9pm
- Urgent Care access 7 days per week 9am-9pm
- Quick and Easy Annual Physical Exams
- Virtual Wellness Coach to get you started with weight loss and exercise



How do I schedule my Annual Physical?

Let your Care Navigator know that you would like to be seen for your annual physical. One of our PRIME providers will perform your intake virtually before scheduling your physical at one of our locations. Physicals can be performed between 9am-9pm, 7 days a week.



I have a health concern but its after 9pm? Can you help?

Our Care Navigators are available 24/7 to assist you with any questions or concerns you may have. Additionally, a PRIME provider is always available day or night for a telemedicine appointment.



What if I have a serious medical condition?

If we determine that your condition requires a specialist, we will refer you to a specialist IN NETWORK with your insurance. If your condition is emergent, we will send you to the nearest emergency room.



NEXT LEVEL PRIME EMPLOYEE ENROLLMENT

Employee Information				
Last Name	First Name	Date of Birth	Social Security Number	
Street Address		City, State, Zip		Marital Status <input type="checkbox"/> Single <input type="checkbox"/> Married
Gender <input type="checkbox"/> Male <input type="checkbox"/> Female	Email Address	Date of Hire	Phone Number	
Dependent Information				
<input type="checkbox"/> Husband <input type="checkbox"/> Wife	Last Name	First Name	Date of Birth	Social Security Number
<input type="checkbox"/> Daughter <input type="checkbox"/> Son <input type="checkbox"/> Other	Last Name	First Name	Date of Birth	Social Security Number
<input type="checkbox"/> Daughter <input type="checkbox"/> Son <input type="checkbox"/> Other	Last Name	First Name	Date of Birth	Social Security Number
<input type="checkbox"/> Daughter <input type="checkbox"/> Son <input type="checkbox"/> Other	Last Name	First Name	Date of Birth	Social Security Number
Signature				
Signature			Date	